

## Reading your water meter

### Meter location

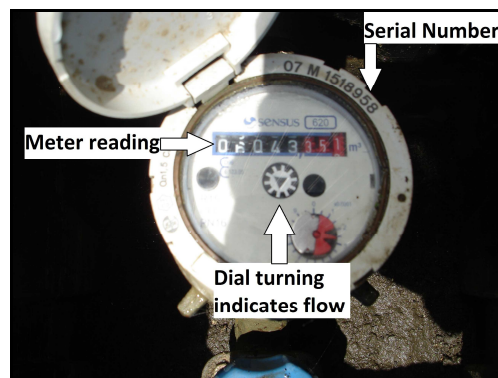
Most water meters are located in a blue toby box on the property boundary either on a footpath or in the grass berm:



If required, the water supply to your house can be turned off by turning the shut off valve clockwise.

### Meter information

Your meter is read in cubic metres ( $m^3$ ). The black dials indicate the water you have used in  $m^3$  and a serial number is used to identify each meter:



### Checking for Leaks

If you want to check for a leak on your property, turn off all taps and appliances that use water and then check the meter. If the dial is turning it indicates water is flowing through the meter; evidence of a possible leak. Contact a plumber to fix the leak – remember, you will be charged for using over  $350m^3$  per year, even if it is due to a leak.